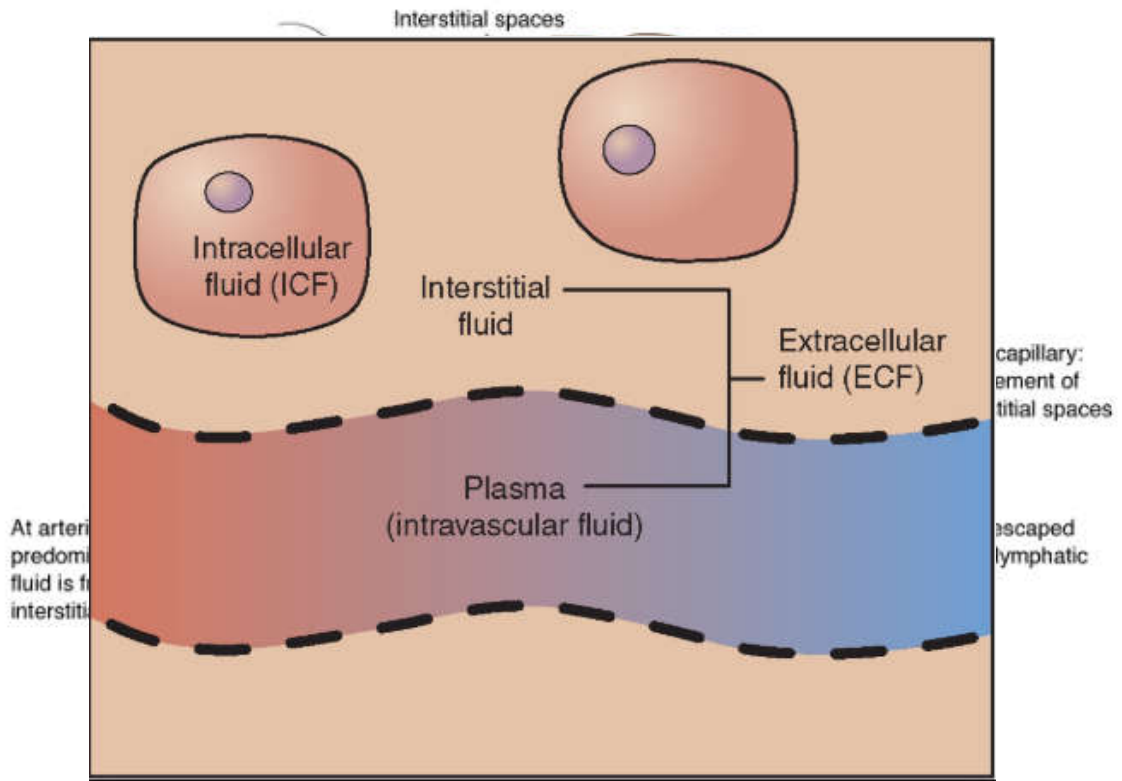
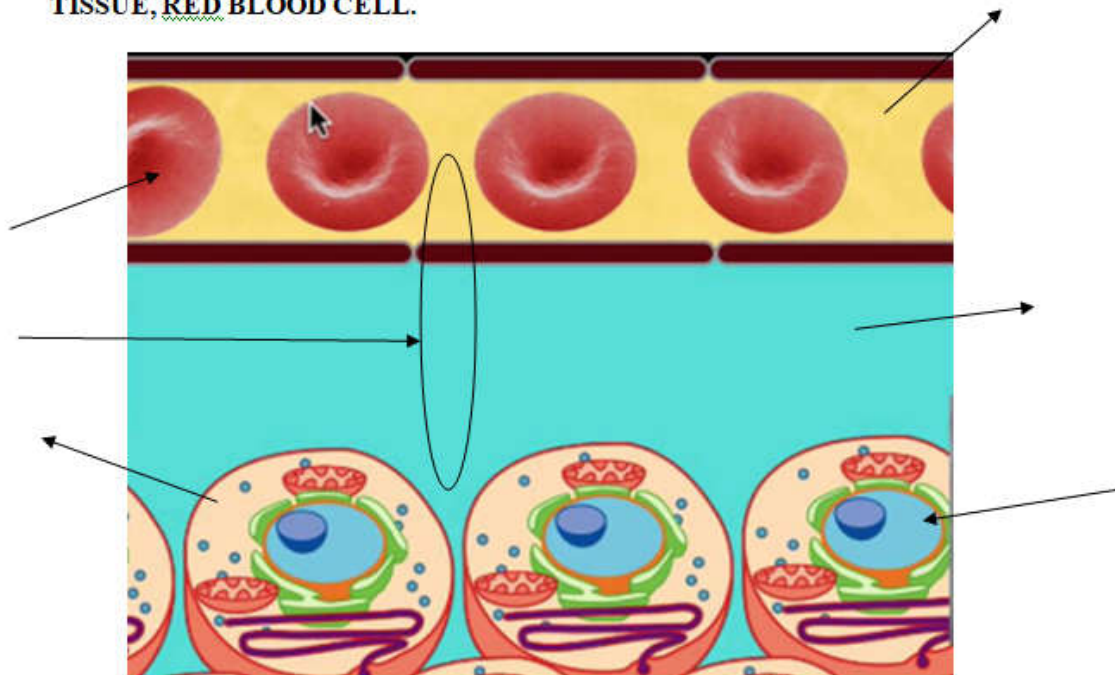


The circulatory system

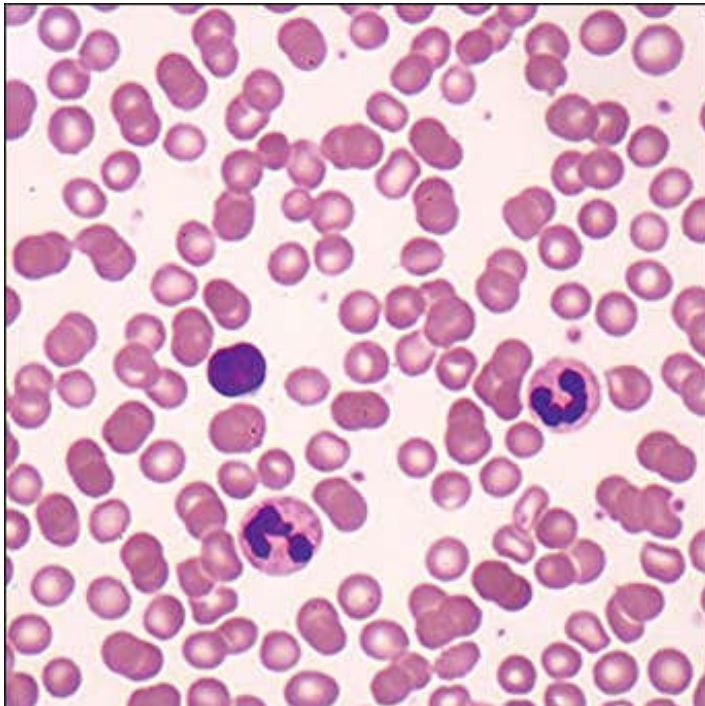
Blood: the fluid of life



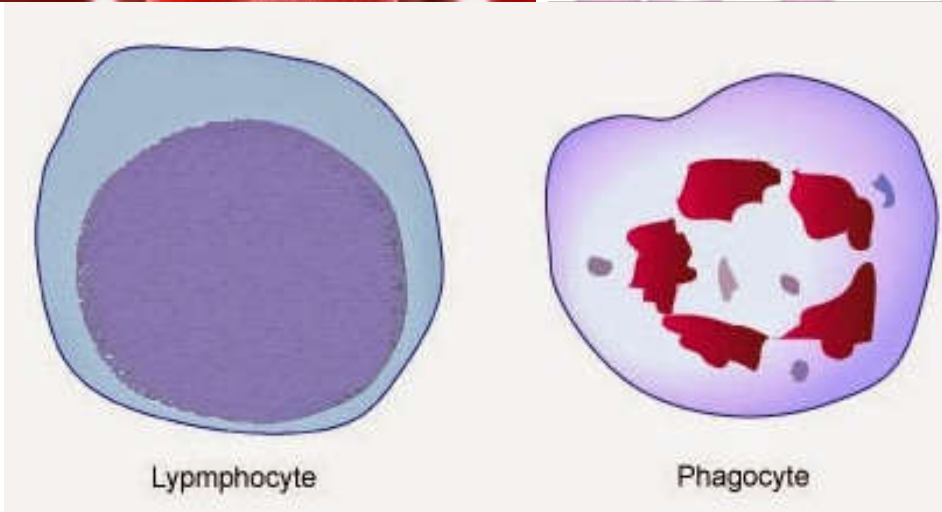
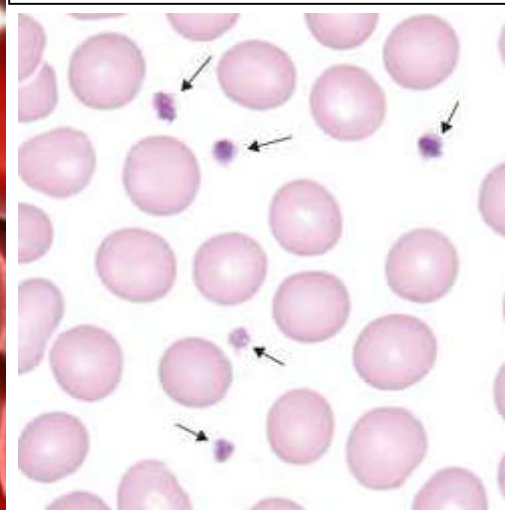
TASK: LABEL THIS PICTURE WITH THESE WORDS: EXTRACELLULAR FLUID, INTERSTITIAL FLUID, PLASMA, INTRACELLULAR FLUID, CELL TISSUE, RED BLOOD CELL.



There are three types of blood cell:



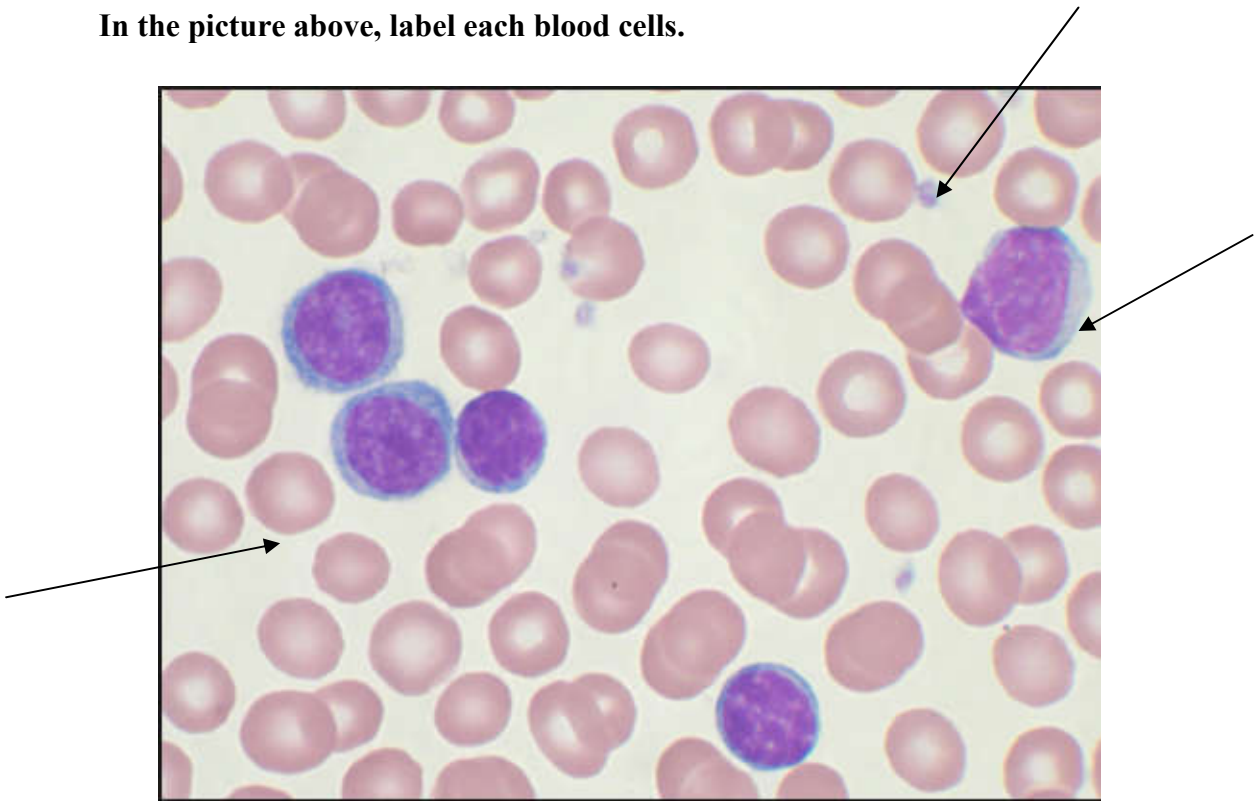
PLATELETS



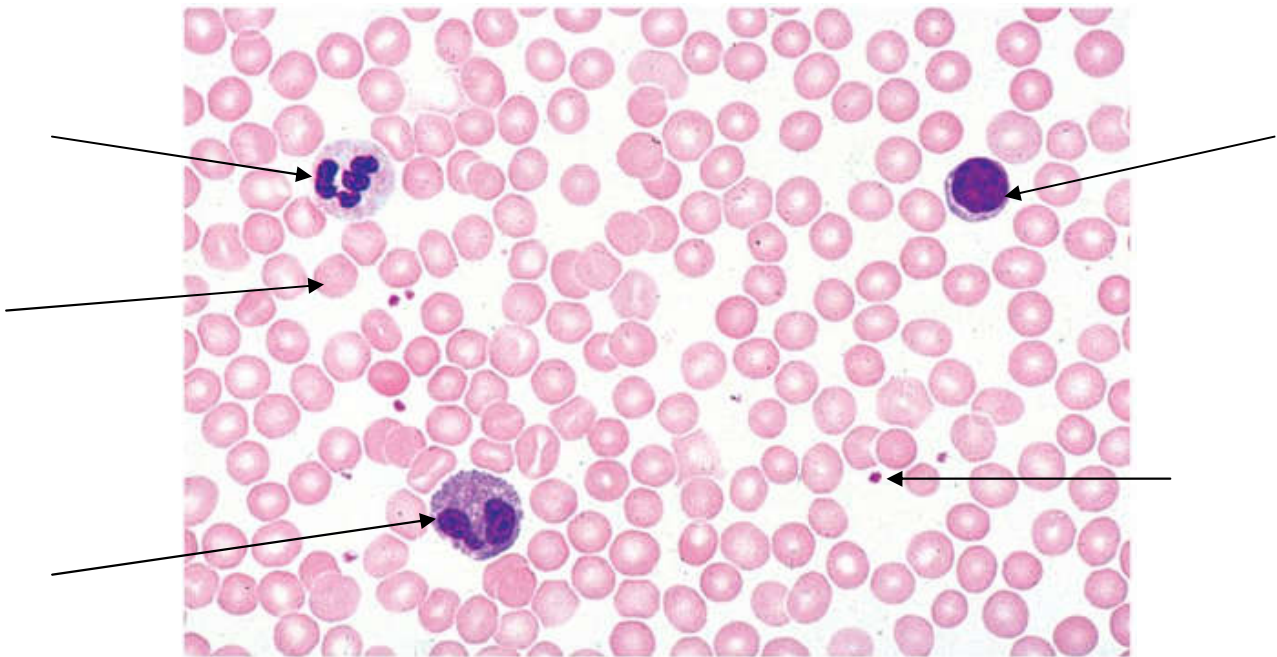
Lymphocyte

Phagocyte

In the picture above, label each blood cells.



How many white blood cells do you see?



And now, how many white blood cells do you see?

PLAY WITH KAHOOT:

<https://play.kahoot.it/#/intro?quizId=b2875c51-0645-4db2-a4d2-684d4f85f6eb>

TASK: READ THE FUNCTIONS OF BLOOD AND PLACE EACH PICTURE IN THE CORRECT FUNCTION.

Platelets

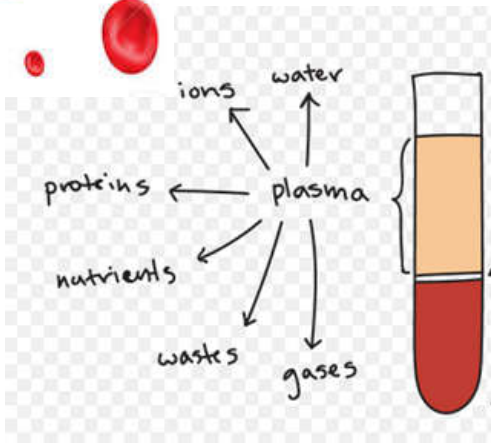
Objective: Try to remember all the important roles blood fulfils.



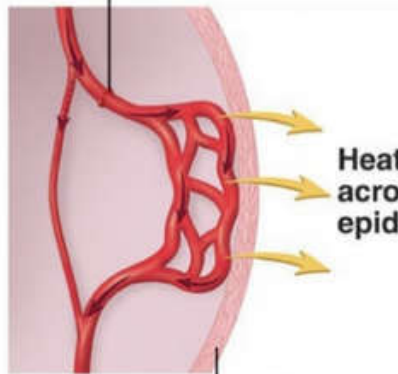
Red Blood Cells



- 1 It transports **nutrients and oxygen** to all cells.
- 2 It collects **waste** products released during cell metabolism. The main waste products are urea, uric acid and carbon dioxide.
- 3 It transports **hormones** around the body, which play an essential role in controlling body functions.
- 4 It helps **regulate temperature**. Blood works like a central heating system, moving body heat from the warmer areas of the body to the cooler ones.
- 5 It plays an essential role in **protecting** our bodies from infections.
- 6 It **prevents blood loss** when a blood vessel is broken through a series of mechanisms.



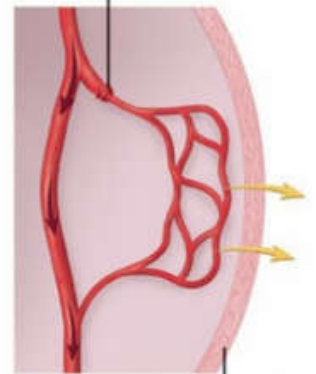
Blood vessel dilates (vasodilation)



Epidermis
Increased heat loss

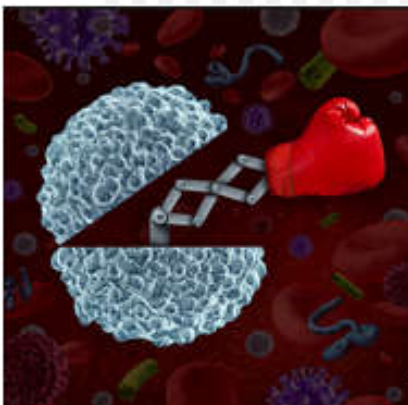
(a)

Blood vessel constricts (vasoconstriction)

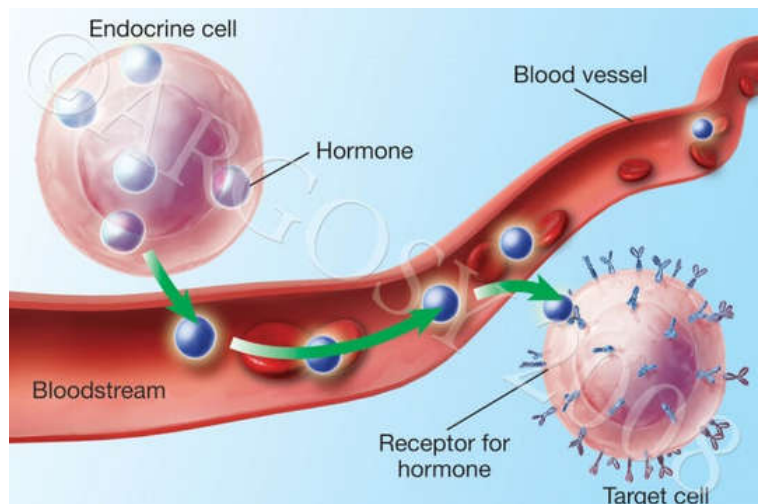


Epidermis
Heat conservation

(b)



WHITE BLOOD CELL



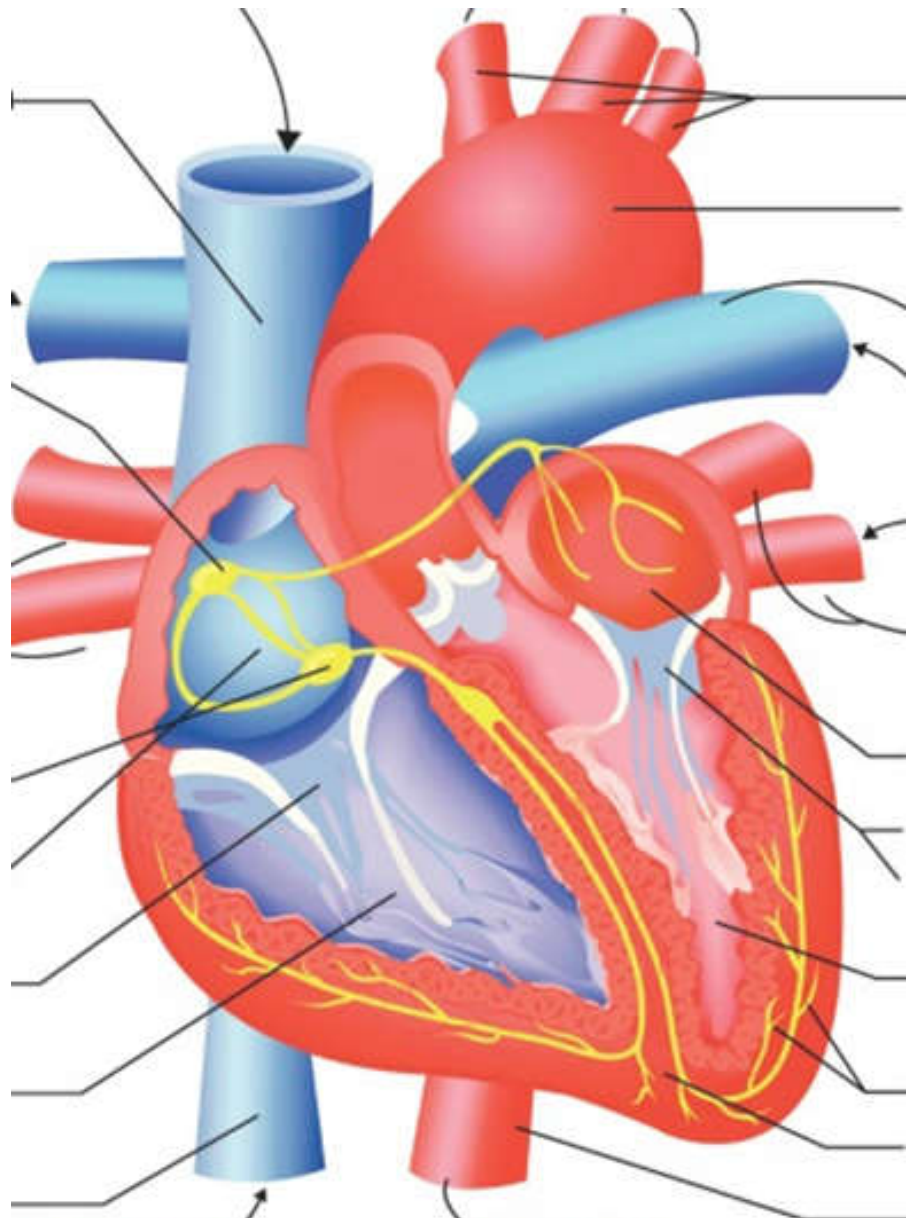
Introductory circulatory system quiz

<https://www.khanacademy.org/science/health-and-medicine/circulatory-system/circulatory-system-introduction/e/heart-quiz>

The heart

Word Bank

- 1 Aorta
- 2 Aortic semilunar valve
- 3 Interior vena cava
- 4 Left atrium
- 5 Left pulmonary arteries
- 6 Left pulmonary veins
- 7 Left ventricle
- 8 Mitral valve
- 9 Pulmonary semilunar valve
- 10 Pulmonary trunk
- 11 Right atrium
- 12 Riht pulmonary arteries
- 13 Riht pulmonry veins
- 14 Riht ventricle
- 15 Superior vena cava
- 16 Tricuspid valve



CIRCULATORY SYSTEM: MATCHING. USE THE FOLLOWING WORDS:

ARTERIES	1) pumps blood to entire body
VEINS	2) carry blood away from the heart
CAPILLARIES	3) stop you from bleeding to death
PULSE	4) red blood cells-white blood cells-platelets
AORTA	5) pumps blood to lungs
PLASMA	6) carry blood to the heart
FORMED ELEMENTS	7) delivers oxygen rich blood to every cell in body
RED BLOOD CELLS	8) surge of blood
PLATELETS	9) force blood puts on vessels
WHITE BLOOD CELLS	10) divides heart into two sides
BLOOD PRESSURE	11) receives oxygen poor blood
HEART	12) connects atriums to ventricles
RIGHT ATRIA	13) branches off the heart and then divides into smaller arteries
LEFT ATRIA	14) carry oxygen and carbon dioxide through body
RIGHT VENTRICLE	15) tiny vessels
LEFT VENTRICLE	16) most powerful part of heart
LEFT VENTRICLE	17) made mostly of water
VALVE	18) receives oxygen rich blood
SEPTUM	19) How many pumps in the heart
2	20) keeps you from getting infections

Task: Complete these sentences:

- Blood carries to the other organs in the body. -----
- The -----is the central organ in the circulatory system. It has four chambers.
- The chambers in the upper part of the heart, which receive blood from the rest of the body, are called _____, -----•
- The chambers in the lower part of the heart, which pump blood to the rest of the body, are called -----• .
- ----- carry oxygen and give blood its color.
- ----- help fight germs and illness.
- ----- is the yellowish liquid in the blood that
- ----- carries nutrients from food to the rest of the body.
- ----- are the blood vessels that carry blood away from the heart.
- Blood vessels that return blood to the heart are called -----•

Blood flow through the heart

So, this is how it goes:

LISTEN TO THIS SONG ABOUT CIRCULATORY SYSTEM

<https://www.youtube.com/watch?v=U2WG4gRt1yE>

